

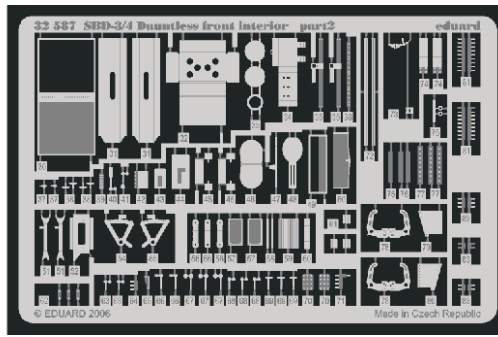
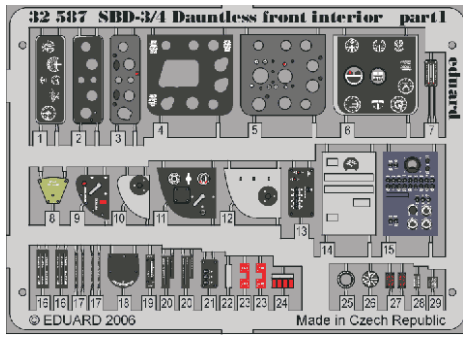


# SBD-3/4 Dauntless front interior

eduard

32 587

1/32 scale detail set for Trumpeter kit • sada detailů pro model 1/32 Trumpeter



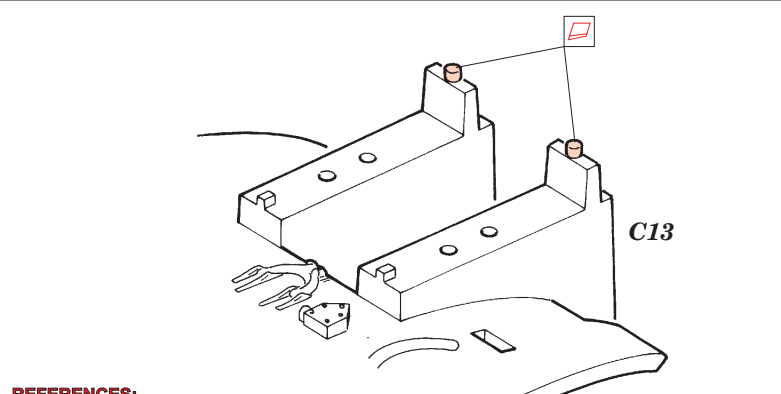
- APPLY EXPRESS MASK AND PAINT BEFORE GLUING  
POUŽIT EXPRESS MASK NABARVIT PŘED SLEPENÍM
- SYMMETRICAL ASSEMBLY  
SYMETRICKÁ MONTÁŽ
- REMOVE  
ODSTRANIT
- GRIND  
OBROUSIT
- DRILL HOLE  
VRTAT OTVOR
- BEND  
OHNOUT
- OPTION  
VOLBA
- REPLACE  
NAHRADIT

ORIGINAL KIT PARTS  
PŮVODNÍ DÍLY STAVEBNICE

PHOTO-ETCHED PARTS  
LEPTANÉ DÍLY

PARTS TO BE REMOVED  
DÍLY K ODSTRANĚNÍ

FILL  
TMELIT



**REFERENCES:**  
 Squadron/Signal Publ.: In Action # 1064 - SBD Dauntless  
 Squadron/Signal Publ.: Walk Around # 5533 - SBD Dauntless  
 Detail & Scale #48 - SBD Dauntless

