

# 648 255 Bf 109G-6 propeller

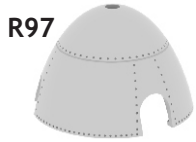
for Eduard kit - pro stavebnici Eduard



1/48 scale



R99  
3pcs.



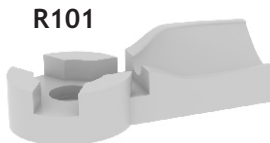
R97



R98



R100



R101

## COLOURS

GSI Creos (GUNZE)		Mr.METAL COLOR	
AQUEOUS	Mr.COLOR	Mr.METAL COLOR	
[H 65]	[C 18]	[SM01]	SUPER FINE SILVER
	[C 92]		
			BLACK GREEN
			SEMI GLOSS BLACK

This product contains metal and resin detail parts for upgrading scale plastic models. When selecting this set make sure that it is for the kit mentioned in product name as these sets are made specifically for that kit. When upgrading the model some cutting or corrections may be necessary for parts to fit accurately. **WARNING!** This set contains small and sharp parts. Work carefully in a ventilated and well-lit room. Safety glasses are recommended. This product is not suitable for children below 14 years of age.

Tento výrobek obsahuje leptané a odlévané detaily pro úpravu a vylepšení plastického modelu. Při výběru sady kovových detailů zkontrolujte, zda je určena pro model, který chcete upravit. Model, pro který je sada určena, je uveden u názvu výrobku. Pro přesnou aplikaci kovových a odlévaných dílů může být zapotřebí upravit díly upravovaného modelu. **POZOR!** Sada obsahuje malé ostré díly. Pracujte ve větrané a dobře osvětlené místnosti. Doporučujeme použití ochranných brýlí. Tento výrobek není vhodný pro děti mladší 14 let.

## eduard

435 21 Obrnice 170  
Czech Republic

www.eduard.com



8 159 14 371 508 600

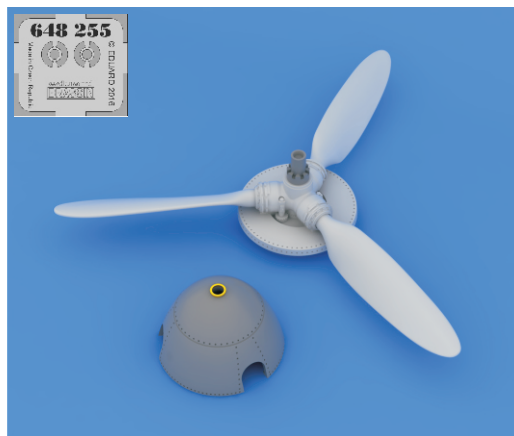


# 648 255 Bf 109G-6 propeller

for Eduard kit - pro stavebnici Eduard

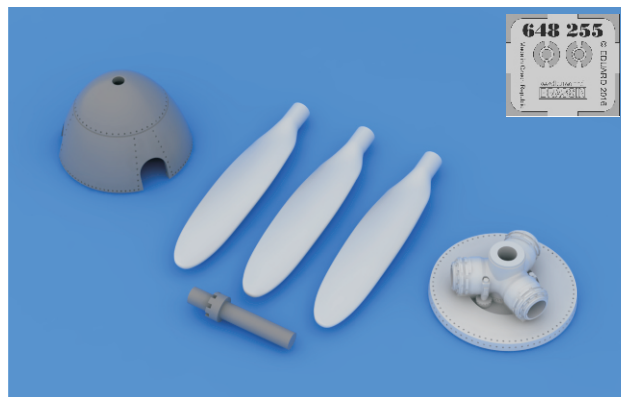
1/48

BRASSIN



BRASSIN

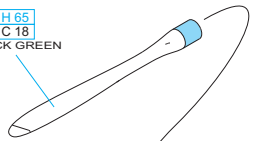
## eduard



~~BEST BRASS~~ RESIN AROUND!

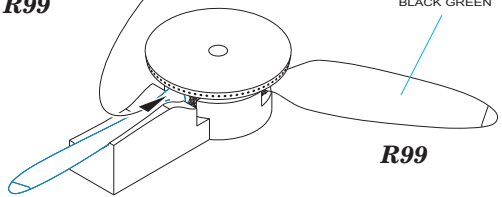
1

H 65  
C 18  
BLACK GREEN



R99

H 65  
C 18  
BLACK GREEN



R99

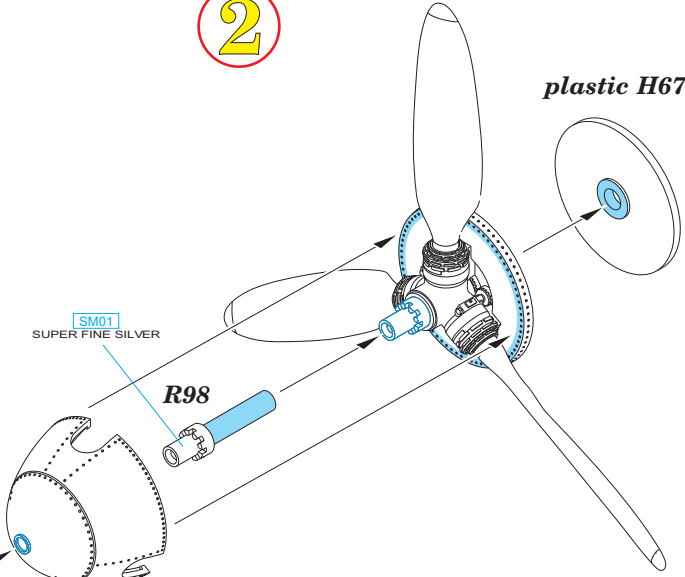
- |  |                           |  |                     |  |   |
|--|---------------------------|--|---------------------|--|---|
|  | REMOVE<br>ODSTRANIT       |  | BEND<br>OHNOUT      |  | SYMMETRICAL ASSEMBLY<br>SYMETRICKÁ MONTÁŽ |
|  | GRIND<br>OBROUSIT         |  | OPTION<br>VOLBA     |  | SCRIBE THE PANEL AND HOLES<br>RYTI        |
|  | DRILL HOLE<br>VRTAT OTVOR |  | REPLACE<br>NAHRADIT |  | REVERSE SIDE<br>OTOCIT                    |

2

plastic H67

SM01  
SUPER FINE SILVER

R98

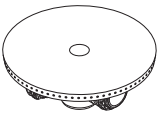


PE1

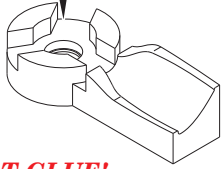
R97

SM01  
SUPER FINE SILVER

R100

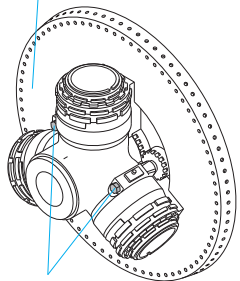


R101



**DO NOT GLUE!**

C 92  
SEMI GLOSS BLACK



SM01  
SUPER FINE SILVER

R100